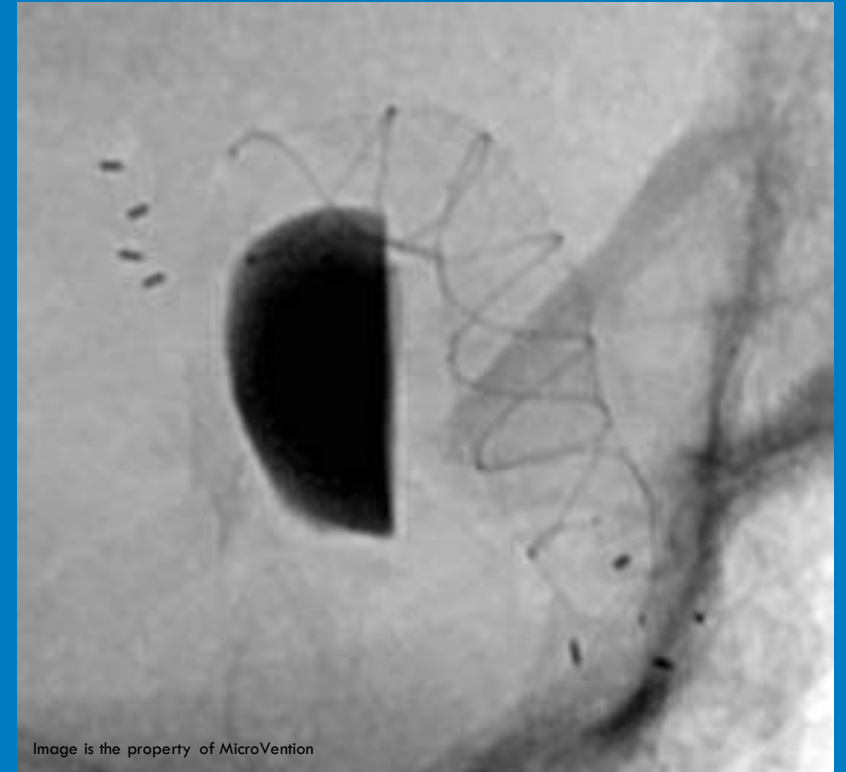


31. Stentas remodeliuojantis srovę



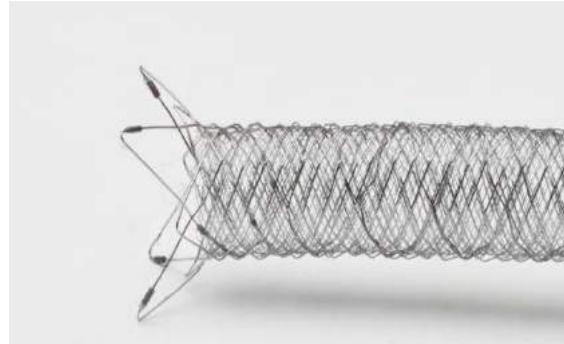
THE FRED® SYSTEM
NEWEST CLINICAL EVIDENCE



FRED[®] SYSTEM DESIGN SPECIFICATIONS



Only delivered through **Headway²¹**
Microcatheter



Flow Diverter
% Surface Coverage
28% to 33%¹

Available Diameter
sizes (mm):

2.5 and 3.0

Working Lengths:

8mm to 37mm

Struktūra - dvisluoksnis stentas, sudarytas iš vienos nitinolinės vielos su 16 išorinių ir 36 arba 48 vidinių persipynusių vijų (iš viso 54 arba 66), sienelės vidinio paviršiaus efektyvus metalo dangos tankis 28% - 44%, abiejuose galuose po 4 lapelius adaptacijai, kurių ilgis - 2mm - 3mm

Stento diametras - 2,5mm - 5,5mm



Only delivered through **Headway²⁷**
Microcatheter



Flow Diverter
% Surface Coverage
33% to 44%¹

Available Diameter
sizes (mm):

3.5, 4.0, 4.5, 5.0, 5.5

Working Lengths:

7mm to 39mm

Stento ilgis - darbinis ilgis 7 mm - 56 mm, bendras ilgis - 13 mm - 62 mm, galimas ilgio sutrumpėjimas po implantacijos 27% - 59%

FRED[®] SYSTEM DESIGN FEATURES

Struktūra - dvislauksnis stentas, sudarytas iš vienos nitinolinės vielos su 16 išorinių ir 36 arba 48 vidinių persipynusių vijų (iš viso 54 arba 66), sienelės vidinio paviršiaus efektyvus metalo dangos tankis 28% - 44%, abiejuose galuose po 4 lapelius adaptacijai, kurių ilgis - 2mm - 3mm

Outer Braid

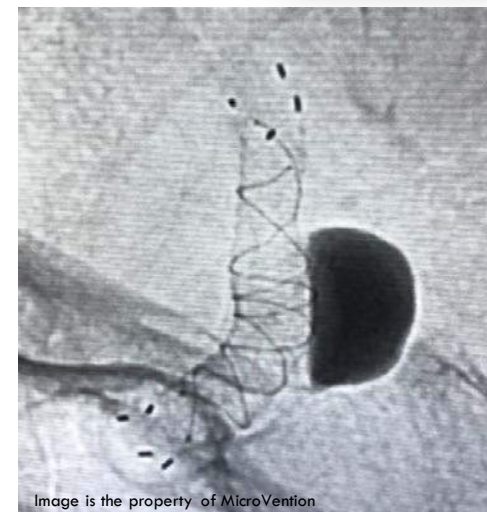
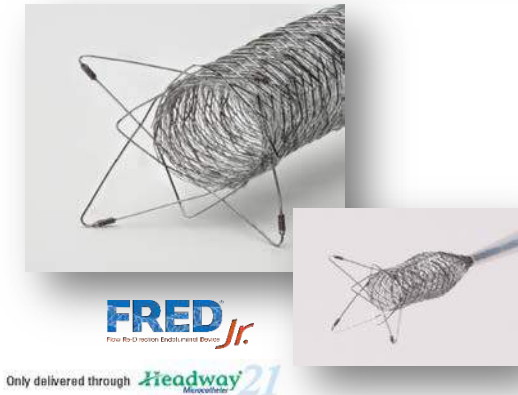
- **Single** nitinol wire with 16 passes
- Distal and Proximal flared ends with 4 radiopaque markers each

Inner Braid

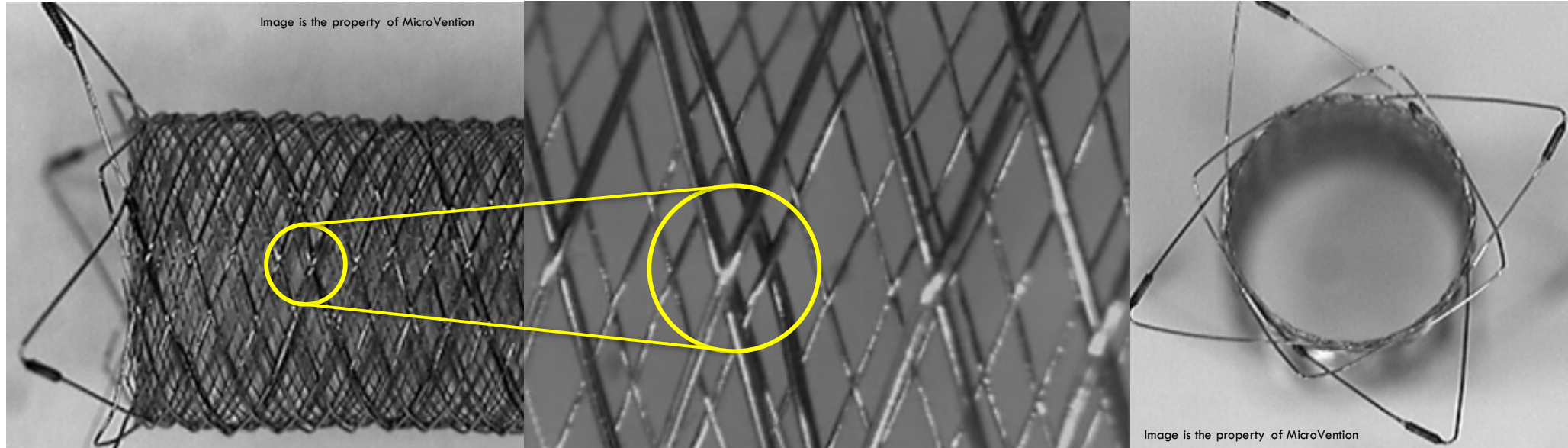
- FRED[®] device - **48 braided nitinol wires** compatible with a Headway[®] 27 microcatheter (*distal tip*)
- FRED[®] Jr device - **36 braided nitinol wires** compatible with a Headway[®] 21 microcatheter (*no distal tip*)

Helical Implant Strands

- Two radiopaque InterWoven tantalum wires
- Visualization of the flow diverter braid working length
- Fully integrates the outer and inner braids



FRED[®] SYSTEM “INTERWOVEN” DESIGN



Key features of the FRED[®] system design¹

- ✓ Easy deployment technique
- ✓ Consistent stent opening with ability to recapture
- ✓ Stable vessel wall apposition
- ✓ Low delivery friction through microcatheter
- ✓ Visible working length and flared ends
- ✓ No gap between outer and inner layers

¹ TR12-171, TR13-151, TR15-052, TR12-179, TR13-145, TR15-055)

FRED® Product Sizes

FRED® System

Flow Re-Direction Endoluminal Device

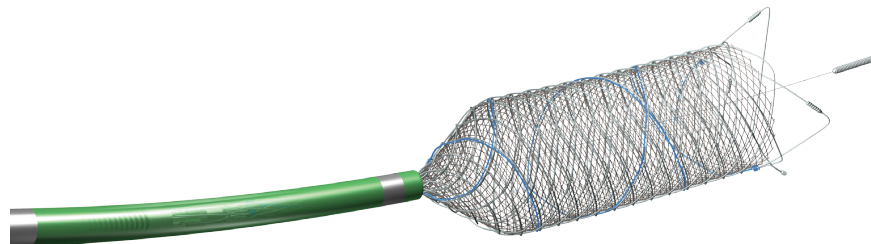
One unit per box

Fully Open Implant Diameter	Cross- Reference Old Product Code	New Product Code	*Working Length (mm) / Total Length (mm) at Target Vessel Diameters (mm)						Crimped Length Inside Microcatheter	% Foreshortening At Fully Open Implant Diameter
			3.0	3.5	4.0	4.5	5.0	5.5		
3.5	FRED3505	FRED3507	10 / 16	7 / 13					21	39
3.5	N/A	FRED3511	17 / 22	11 / 17					32	47
3.5	FRED3525	FRED3516	24 / 30	16 / 22					44	49
3.5	N/A	FRED3524	34 / 40	24 / 31					61	48
3.5	N/A	FRED3536	49 / 54	36 / 40					83	52
4.0	N/A	FRED4007		10 / 16	7 / 13				24	42
4.0	FRED4015	FRED4012		18 / 24	12 / 18				36	49
4.0	FRED4025	FRED4017		26 / 31	17 / 23				49	53
4.0	N/A	FRED4026		37 / 43	26 / 32				69	53
4.0	N/A	FRED4038		53 / 58	38 / 44				94	55
4.5	N/A	FRED4508			11 / 18	8 / 15			27	43
4.5	FRED4515	FRED4513			19 / 26	13 / 20			41	51
4.5	FRED4525	FRED4518			27 / 34	18 / 25			55	55
4.5	N/A	FRED4528			39 / 45	28 / 34			77	56
4.5	N/A	FRED4539			56 / 62	39 / 45			105	57
5.0	N/A	FRED5009				12 / 18	9 / 15		28	44
5.0	FRED5015	FRED5014				20 / 26	14 / 21		44	53
5.0	FRED5025	FRED5019				28 / 35	19 / 26		60	56
5.0	N/A	FRED5029				41 / 48	29 / 36		84	57
5.5	FRED5515	FRED5514					22 / 28	14 / 22	48	54
5.5	FRED5535	FRED5526					38 / 46	26 / 32	83	59

* Outer device total length (including flared ends) and inner device working length (marked by helical strands), constrained in vessel.

31. Stentas
remodeliuojan
tis srovę

Only delivered through  Headway Microcatheter





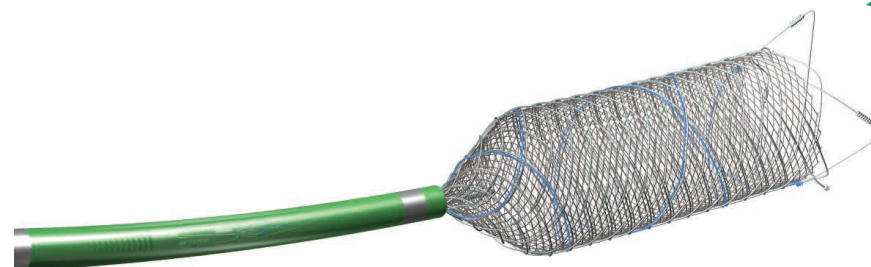
PRODUCT SIZES

One unit per box.

Fully Open Implant Diameter	Product Code	*Working Length (mm) / Total Length (mm) at Target Vessel Diameters (mm)			Crimped Length Inside Microcatheter (mm)	% Foreshortening At Fully Open Implant Diameter
		2.0	2.5	3.0		
2.5	FREDJR2508	11 / 15	8 / 13		18	27
2.5	FREDJR2513	17 / 21	13 / 18		26	33
2.5	FREDJR2520	28 / 32	20 / 25		40	38
2.5	FREDJR2526	35 / 38	26 / 30		49	39
3.0	FREDJR3009		12 / 16	9 / 13	20	32
3.0	FREDJR3014		19 / 23	14 / 19	30	38
3.0	FREDJR3021		29 / 34	21 / 27	46	42
3.0	FREDJR3027		37 / 41	27 / 32	56	44

* Outer device total length (including flared ends) and inner device working length (marked by helical strands), constrained in vessel.

31. Stentas remodeliuojantis srovę



DELIVERED THROUGH:
Headway[®] 21
 Microcatheter